

14th
EDITION



FeedTech

B a n g l a d e s h

14th INTERNATIONAL TRADESHOW ON FEED MILLING TECHNOLOGY,
SILOS, BOILER, LAB EQUIPMENT, FEED ADDITIVES & INGREDIENTS,
PACKAGING, FEED PELLET & ACCESSORIES FOR FEED INDUSTRY

05

06

07

November-2026

ICCB, Dhaka, Bangladesh



Organizer



Media Partner

GRAIN FEED & MILLING MAGAZINE
KNOW THE GRAIN FEED & MILLING WORLD
WWW.GFMDHAKA.COM

www.feedtechbd.com





About Exhibition

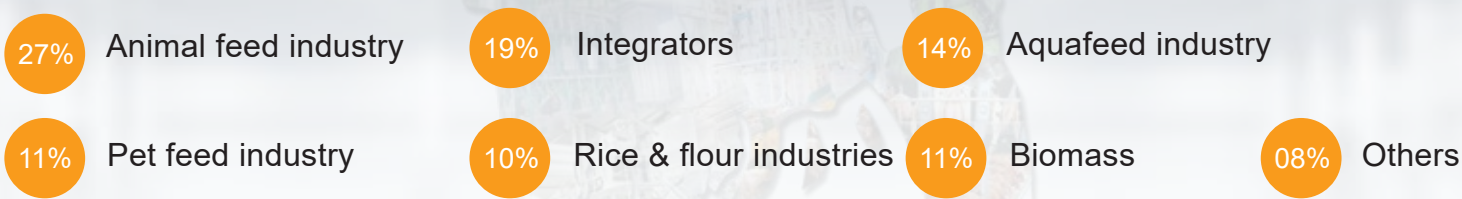
The prime objective of this show is to apprise farmers on upcoming technologies, knowledge and experiences to introduce and to motive the farmers. This exposition will evolve a balanced relationship between livestock farmers business community and technology savvy companies, government departments, agriculture universities from across the Bangladesh and abroad will exhibit their products and schemes which will benefit the farmers to great extent. Progressive farmers, agri input traders, agri extension officers and media delegates from all over Bangladesh will visit the three day show.

13TH INTERNATIONAL FEEDTECH BANGLADESH 2025 REPORTS

PURPOSE OF VISIT (MULTIPLE ANSWERS)



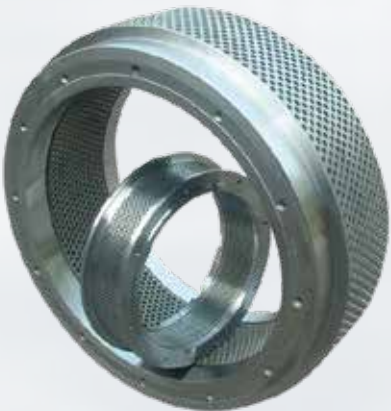
BY BUSINESS CATEGORY



13th edition of int'l Exhibition Feed Tech Bangladesh 2025 attracted 16,792 buusiness visitors form all sectors of the industry including poultry & cattle feed manufacturer, Traders, progressive farmers, Commercial animal breeders, Poultry & Hatchery owners, Agro & Dairy porduct exporters & importers.

Visitor Profile

Progressive farmers, Agri cooperatives, Agri extension officers, Agri Input Traders, Agri Suppliers, Agri business Investors & entrepreneurs, Scientist & Technologists Central & State Govt. Officials and Media delegates, Agro dairy products exporters & importers, Commercial animal breeders, Venture Capitalist and FDI Managers, Agro & Dairy industry consultants, Cooperative society members, Association / Educational and Research institution, Food processing industry professional, poultry and hatchery equipments manufacturers, Merchandiser, wholesalers, traders, retailers, Marketing & Department managers, NGO, Analytical Labaoratories Technicians, Storage transport and logistics suppliers, C & F Agents and Distributors and dealers.



Benefit of Participations

Exhibitions are one of the most effective mediums for establishing and maintaining customers relations.

In an increasingly digital age, they are the only media where buyer, seller and product physically come together a potent force of business.

Through your participation you can:

- Generate Sales.
- Gather business contacts for post show follow-ups
- Identify agents, distributors etc.
- Launch a new products.
- Enhance existing customer relationship.
- Develop product awareness.
- Reach a new market.
- Demonstrate a complex product.
- Conduct market research.
- Generate media coverage.
- Provide platform to national and international organization to negotiate business deals and secure linkage.



Exhibitors Profile

- Ingredients
- Additives & premixes
- Laboratory equipment
- Storage technology
- Milling technology
- Silage production technology
- Animal health technology
- Packaging material & technology
- Gearboxes/Transmission technology
- Industrial Still Building
- Drying technology
- Boiler/Power generation technology
- Forage harvesting technology
- Hydroponic technology
- Automation technology
- Feed producer
- Feed production technology
- Ancillary equipments
- Silo
- Bagging Machines and Equipmen

Cost of Participation

Corner Space Shell Scheme: US\$ 380/ Per Square Meter + VAT 15 %

Minimum Space : 9 Square Meters

Shell Scheme : US\$ 350/ Per Square Meter + VAT 15%

Minimum Space : 9 Square Meters

Bare Scheme : US\$ 300/ Per Square Meter + VAT 15%

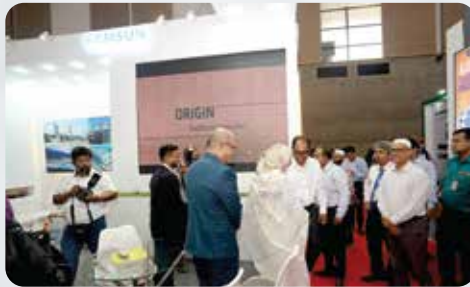
(Minimum 54 Square Meter)

Package stand (Min. 9 sq.m),including :

One package stand of 9sqm includes partitions, carpeted floor, single phase socket, fascia with company name, 01 information counter, 02 chair, 01 fluorescent tube, 02 Spot Lights, 01 waste basket.



Exhibition Picture



LIMRA EXHIBITIONS

House-8 (1st floor), Road-8, Nobodoy Housing
Mohammadpur, Dhaka-1207. Bangladesh,
Tel: +880-2-41023610, Fax: +880-2 9119283,
Mobile: +880-1619001919, +880-1713545063
Skype: sanowar97, E-mail: info@limraexpo.com,
Web: www.feedtechbd.com

Concurrent Shows

